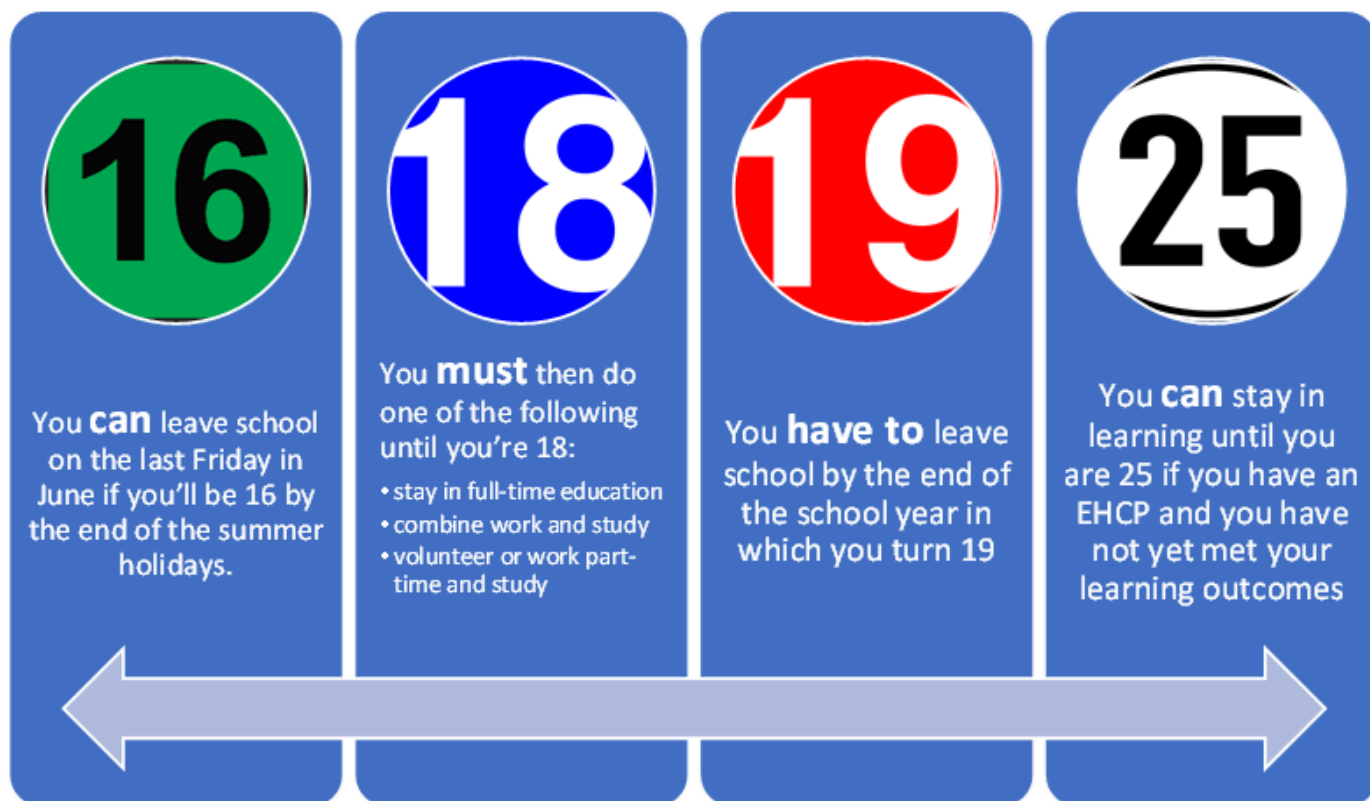


Education routes and other support ...



[Options you have with an Education Health and Care Plan](#)

[Sixth Forms and Colleges in Dorset](#)

If you would like to think about learning in a **specialist college** after school you can find out about specialist colleges here:
<https://natspec.org.uk/colleges/>

If you go on to do **Higher Education (University)** your EHCP will cease but you can claim Disabled Students allowance

This video explains how : <https://www.youtube.com/watch?v=PvVlOzS-8FA>

Look at the [UCAS website](#) for lots of information on Higher Education including entry requirements for different types of course

You can apply for **Access to Work** funding if you are going to do a job, apprenticeship, or Supported internship - click [here](#) to watch a video about how to apply

Access to work is a Government Scheme designed to provide help to disabled people who have a job and are experiencing disability related challenges within work.

It can be used for

- Job Coaching
- Interpreters – preparing and having a communicator for interviews
- Working interviews/Job trials
- Equipment, Aids and Apps
- Signers
- Disability awareness training
- Job Mentoring
- Support Worker
- Travel Training
- Taxis
- Mental Health Support Service

There is also a legal duty under the **Care Act** to facilitate employment and volunteering opportunities to people with disabilities, and other vulnerable adults. Ask a social worker for more information.

Self-employment and enterprise: (You could access either of these after school or while you are still at school)

Ø <https://independentandworkready.co.uk/> offer virtual training and work experience in product design leading to a qualification Participants watch animations learning about business and printing methods and have sessions with artists using both traditional art and digital IT skills. IWR encourage employability and self- expression. Participants on completion can set up their own business selling their own designs.

Ø <https://sameecharity.org/> Day-to-day the SAMEE team work with people from all walks of life, from school aged children up to adults looking for a new career path more accessible to their needs. We don't believe in limiting our support services based on the level of disability. Instead, we pride ourselves in the **quality** and **adaptability** of our support enabling us to provide **bespoke guidance** no matter the need.

You can search **apprenticeship** providers here: <https://www.gov.uk/apply-apprenticeship> and the Not Going To Uni website also has apprenticeship and job opportunities <https://notgoingtouni.co.uk/opportunities>

[Into Apprenticeships](#) is a guide for disabled people, parents and key advisers about applying for apprenticeships in England. It deals with common questions such as how to find an apprenticeship, whether the training will be accessible and what support is available in the workplace.

Supported Internships are a way of getting into work with some additional help if you don't feel quite ready for a job/apprenticeship. Here are some local examples:

- employability.org.uk/supported-internships/
- [Weymouth College](#)
- [Kingston Maurward College](#)
- [SWRAC \(South-West Regional Assessment Centre\)](#)

Examples of National organisations offering **support to find work and/or work opportunities** for disabled people:

Support to work (Scope) <https://www.scope.org.uk/employment-services/support-to-work/>

Sense - Employment support for people with complex disabilities

<https://www.sense.org.uk/our-services/education-and-work/employment-support-people-with-complex-disabilities>

Evenbreak - <https://www.evenbreak.com>

Ambitious about Autism - <https://www.ambitiousaboutautism.org.uk/what-we-do/employment/paid-work-experience>

Diversity Jobs - <https://diversityjobsgroup.com>

Working out what you might want to do:

- [Dorset Your Futures](#) - offers information about future study options, labour market opportunities and the Local Offer
- [Information to help young people with SEND](#) decide what route to take in education, training or work.
- [Planning together](#)
- [Explore jobs and careers](#)
- [Skills assessment](#) - This is not meant to tell you what job to do in the future...it just makes you aware of a range of jobs that you may want to think about.

Making adult life work for young people

- [Preparing For Adult Life Guide](#) - a guide for parents or carers of young people who are disabled or have special educational needs, with or without an Education Health & Care Plan. Dorset Parent Carer Council in collaboration with Dorset Council, parents, carers, and providers of education and health services including NHS Dorset.
- [Right to Participate](#) aims to increase awareness of the Equality Act, especially the ways it can protect disabled people from discrimination in everyday situations.

The Mental Capacity Act is an important law. It protects your rights to make your own choices.

Every adult (16+), whatever their disability, has the right to make their own decisions wherever possible.

People should always support a person to make their own decisions if they can.

Click [here](#) to watch a video

Special Educational Needs and Disability Information, Advice and Support Service (SENDIASS).

The service is for:

- children and young people aged 0 to 25 with special educational needs and disability (SEND)
- parents and carers of children and young people with SEND

Find out more [here](#)